



# Active Job Manager

## User Guide

Active Circle

# SUMMARY

1. Introduction to the Active Job Manager
2. Access the Active Job Manager
3. Definition of Job Types
4. Jobs Dashboard
5. Jobs List
6. Job Details

# 1. INTRODUCTION TO THE ACTIVE JOB MANAGER

The **Active Job Manager** is a tool for **visualizing and tracking processes** within the **Active Circle platform**.

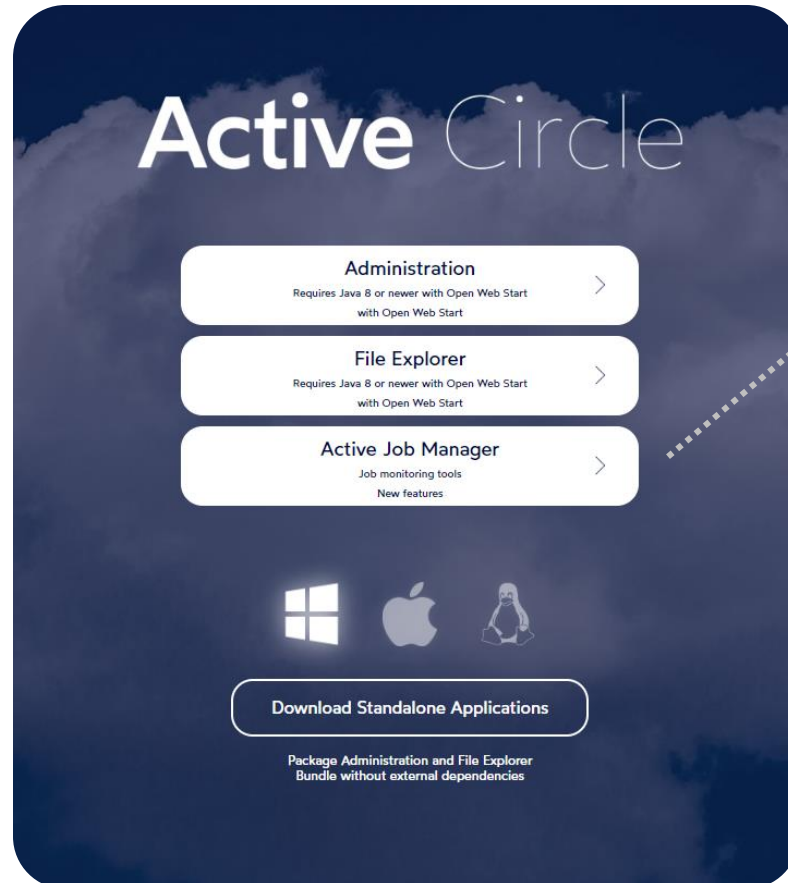
It centralizes in a **single interface** all current or past activities (jobs) on one or more nodes, thus offering a clear and intuitive overview of the system's state.

## THANKS TO THIS TOOL, YOU CAN:

- **Monitor in real time** the processes executed on each node (archiving, versioning, storage, destaging, copy, duplication, etc.)
- **Quickly identify** tasks that are in progress, successfully completed, pending, or requiring intervention
- **Analyze the activity history** to better understand the system's operation and performance

→ The Active Job Manager is therefore an **essential monitoring tool**, designed to facilitate the tracking, analysis and maintenance of your processing flows within Active Circle.

## 2. ACCESS THE ACTIVE JOB MANAGER



**1. Open your web browser** and access the **Active Circle portal** by entering **your node's IP address** in the address bar.

**2. In the main menu, select the "Active Job Manager" button .**

**3. Log in** with your **usual credentials** (the same as for your Active Circle account).

**Note:** You must be a **Data Administrator** to access the **Active Job Manager**.

**You are now connected to the Active Job Manager and ready to explore the activity of your nodes.**

### 3. DEFINITION OF JOB TYPES

#### DESTAGING

Making one or more files from a share available in a node's cache.

#### VERSIONING

Processing of the versioning policy of a share, which manages file versions.

#### ARCHIVING

Archiving files from a share to tape or the cloud.

#### STORAGE

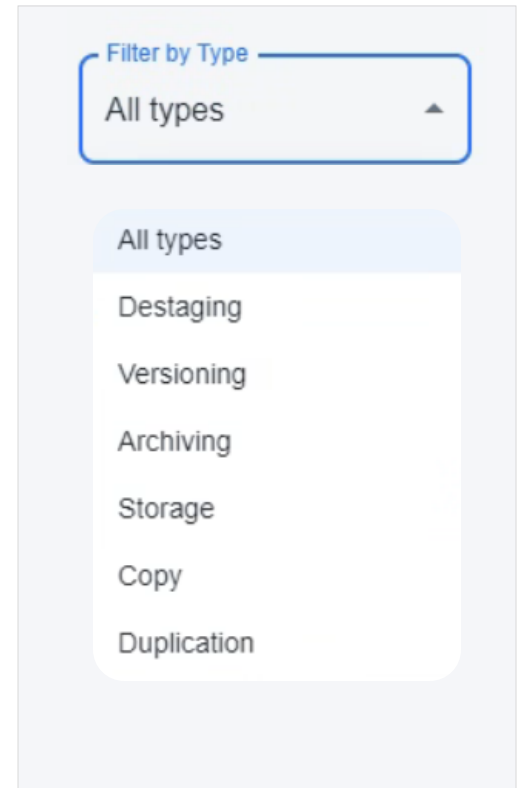
Processing the storage policy of a share, which checks and performs copies of the data to disk if necessary.

#### COPY

Copying one or more files to a client machine from the Active Circle explorer or the *accopy* command.

#### DUPLICATION

Transferring data from one tape to another.



# 4. JOBS DASHBOARD

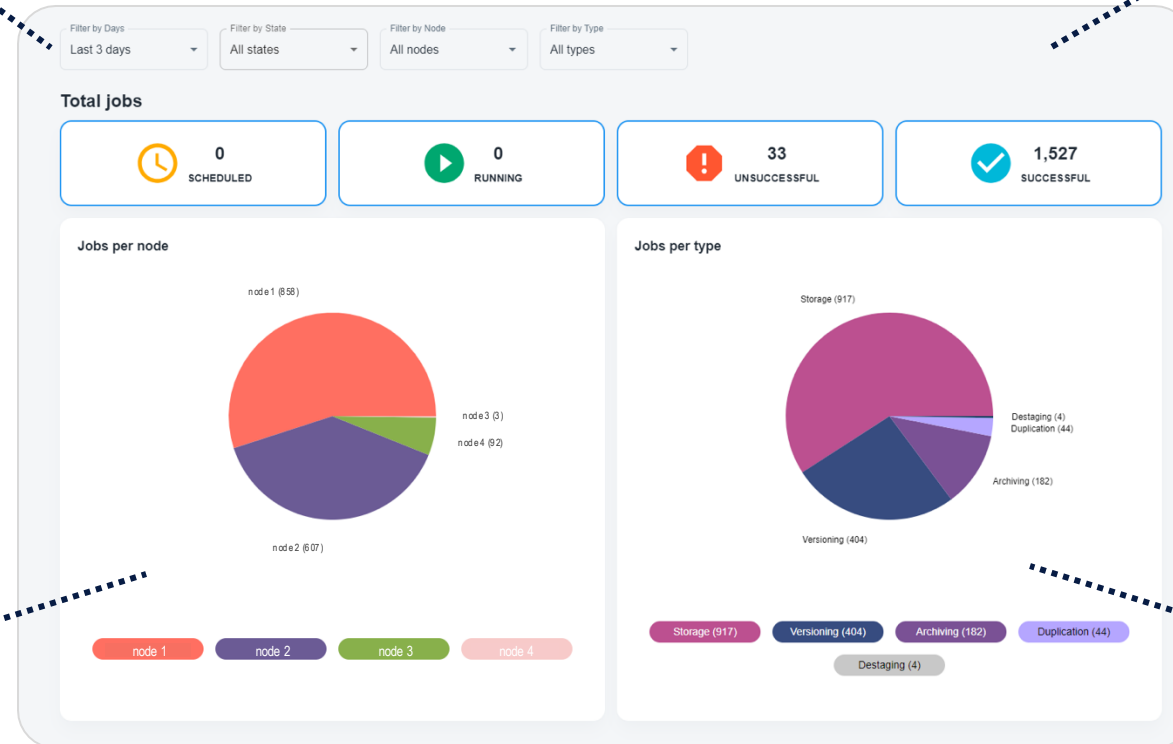
## SEARCH FILTERS

These filters allow to refine the display of the jobs:

- **By duration:** by selecting the number of days since the current date (e.g., last 3 days)
- **By state:** by choosing one or more states (scheduled, ongoing, successful, or failed jobs)
- **By node:** by targeting one or more nodes
- **By type:** by selecting one or more activities (archiving, storage, duplication, etc.)

## JOBS PER NODE

- Displays the **distribution of jobs by node**
- Allows to identify workload or anomalies on a specific node
- Each color corresponds to a node (e.g., node 1, node 2, node 3, node 4...)



## SUMMARY INDICATORS

- **SCHEDULED:** number of tasks planned but not yet started
- **RUNNING:** number of tasks currently running
- **UNSUCCESSFUL:** number of failed tasks
- **SUCCESSFUL:** total number of successfully completed tasks

These indicators provide a **quick overview** of the system's status.

## JOBS PER TYPE

- Displays the **distribution of jobs by process type**: Storage, Versioning, Archiving, Duplication, Destaging, Copy...
- Allows to analyze the **nature of dominant activities** and to identify potential workload imbalances

# 5. JOBS LIST

## PURPOSES OF THIS VIEW:

- To provide a **detailed and comprehensive view** of each job executed on the platform.
- To facilitate the **rapid diagnosis of errors** or interruptions.
- To ensure **accurate monitoring** of the progress and success of treatments.
- To compare **activity between different nodes** to detect potential load imbalances.

→ By clicking on an item in the list, a page opens to display the details of the corresponding job.

## SEARCH BAR

- Allows to **quickly search for a job** by its name, type or description.
- Allows to **filter a specific task** from a large number of results.
- Provides **direct access to key information** without having to scroll through the entire list.

## NODE

Node on which the job was executed (e.g., node 1, node 2, ...)

- Allows to **spotlight the load distribution** across the different nodes of the system.

## NAME

Job name, usually composed of the process type and a unique identifier.

## STAGE

Final phase or cause of job interruption.

- Helps to **quickly identify anomalies** or to confirm the correct execution of the process.

<div>Search...</div>								
Name	Type	Description	Creation date	Last Update	Node	State	Stage	
Duplication:tar_2-39	DUPLICATION	Tape tar_2-39: duplication process, in force mode, started immediately (free defragmentation)	23 Oct 2025, 10:23:08	23 Oct 2025, 10:24:21	node 1	UNSUCCESSFUL	INTERRUPTED_ON_ERROR	
Versioning:part_s3_scaleway	VERSIONING	Share part_s3_scaleway: versioning policy process history only	23 Oct 2025, 10:08:04	23 Oct 2025, 10:08:28	node 2	SUCCESSFUL	NORMALLY	

## TYPE

Process

(e.g.: Duplication, Versioning, Archiving, Storage, etc.)

## DESCRIPTION

Details of the process (mode, parameters, versioning, etc.), allowing to **understand the context of the job**.

## CREATION DATE / LAST UPDATE

Dates and times of job creation and last update.

- Indicates the **execution timeline** and facilitates **performance monitoring**.

## STATE

Current state of the job.

- *SCHEDULED*: planned but not started
- *RUNNING*: currently running
- *SUCCESSFUL*: completed successfully
- *UNSUCCESSFUL*: failed

# 6. JOB DETAILS

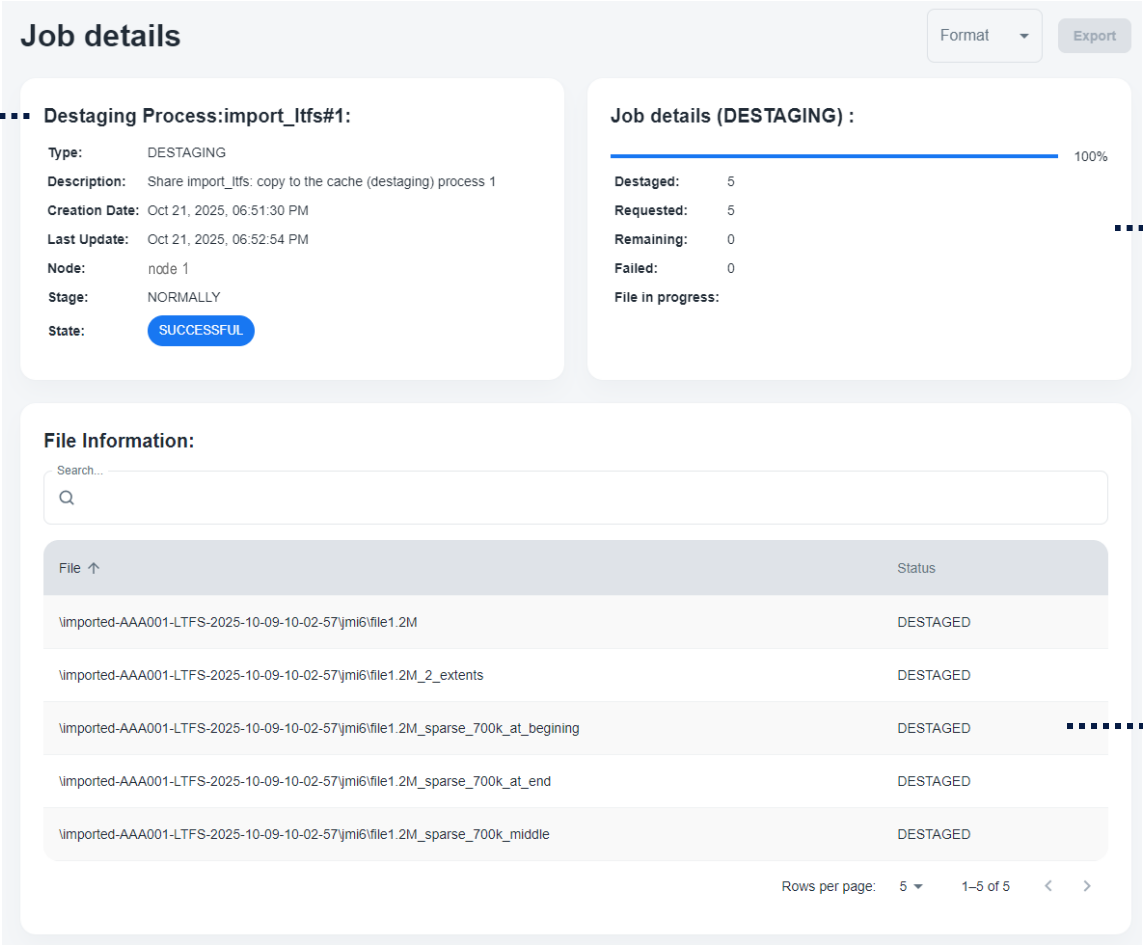
By clicking on an item in the list, a page opens to display the details of the corresponding job.

## GENERAL INFORMATION

Provides a quick overview of key information regarding the selected job.

- **Type** : the process type (e.g., *DESTAGING*)
- **Description** : concise description of the task performed (e.g., *"Share import\_ltfs : copy to the cache (destaging) process 1"*)
- **Creation Date** : date and time the job was created
- **Last Update** : date and time the job was last updated
- **Node** : node on which the job was executed (e.g., *node 1*)
- **Stage** : step or phase of the process (e.g., *NORMALLY*)
- **State** : current state of the job (e.g., *SUCCESSFUL* in green, or *UNSUCCESSFUL* in red if failed)

→ This information allows to quickly understand the context of the job, its status, and its history.



## EXPORT

Allows to export the job information for later analysis (choice of format: JSON, XML, CSV)

## PROGRESS BAR

Displays a visual summary of the job progress. Each job type has **specific details** that are displayed in addition to general information. (here's the example of destaging)

→ This summary allows to follow the progress of the job at a glance and to quickly identify any problems (e.g., failed files).

## FILE DETAILS

List the files associated with the job, with specific information for each.

- **File** : name of the file being processed
- **Status** : file state (e.g., *DESTAGED* if processing is complete)





Active Circle

Contact: [active-circle@oodrive.com](mailto:active-circle@oodrive.com)